



## **Copeland Neighbourhood Policing Team – Beckermest with Thornhill Parish Council Update (AUGUST 2018)**

### **CRIME FIGURES**

Crime figures can be obtained via the following link:

<https://www.police.uk/> .... then

click “Crime Map” and in the location box enter the first part of your postcode and then click the numbers on the map which correspond with the towns they are located at. If there are no numbers in your area then there are no reported crimes.

The crime information above is updated by the Home Office on information received by each Constabulary.

### **INCIDENTS OF NOTE period 01/08/2018 to 31/08/2018**

Anti-social behavior- 5 incidents in total predominantly in the Area of Braystones.

Road Traffic - 5 incidents in total, including a vehicle with no Insurance on the A595 near Thornhill and several minor road traffic collisions at Nethertown, Middletown and Thornhill.

Concerns for welfare- 7 incidents in total involving Police and other agency interventions.

Violence related offences- 3 incidents in total

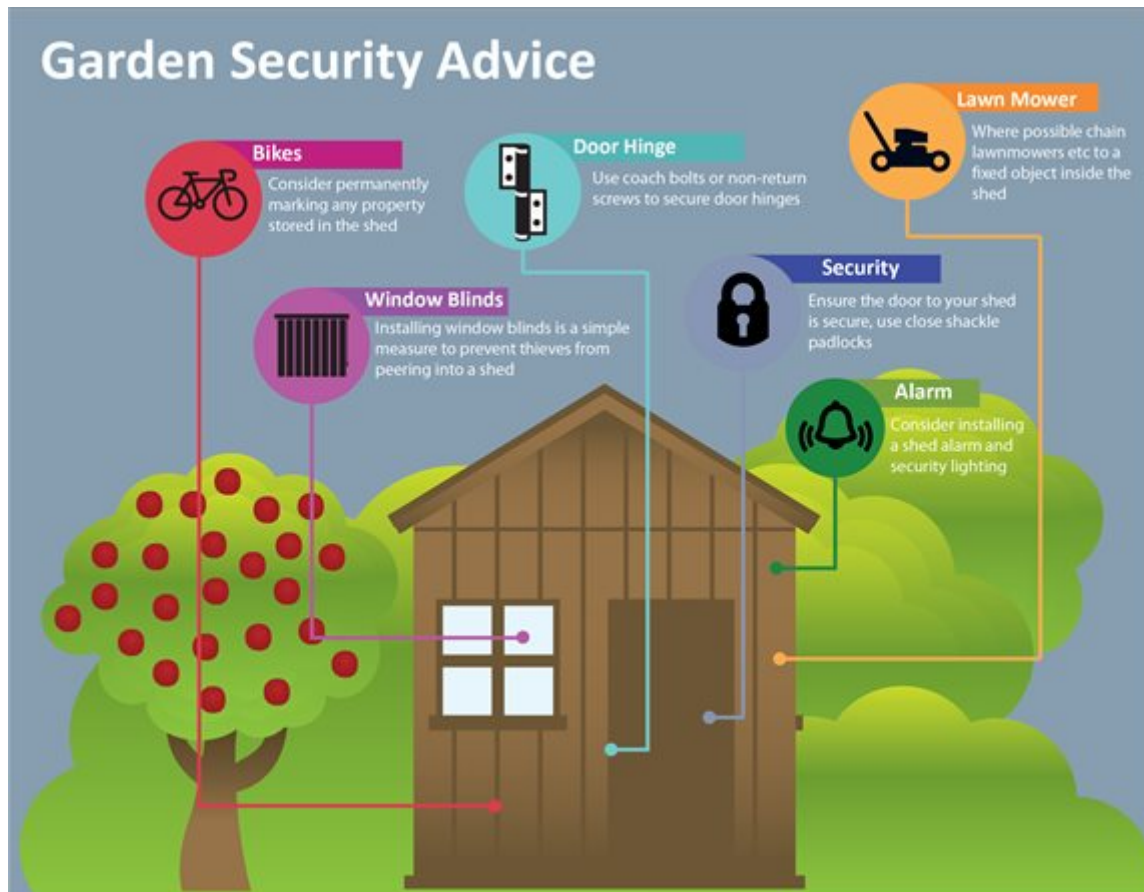
Theft related Offences- Fence posts stolen from a property in Braystones, Theft of a charity box from premises on Bridgend Industrial Estate.

**CRIME PREVENTION TIPS FOR THIS MONTH (SEE ATTACHED TEMPLATES BELOW)**

**Protect your Home!**  
Please take the following crime prevention advice:

- Security**  
Ensure your house is secure, preventing someone entering when you are busy elsewhere in the house or garden. Ensure gates and sheds are locked.
- Camera**  
Consider installing a security camera.
- Room Light**  
Leave a light on in a room and draw curtains when you go out for the night.
- Door & Window Lock**  
Lock doors and windows before you go out. Remove keys from locks and keep out of reach of windows and doors.
- Burglar Alarm**  
Consider fitting a burglar alarm, checking regularly to ensure they work.

The infographic features a central illustration of a two-story house with a garage and a blue car parked in front. Five colored callout boxes with icons (a padlock, a camera, a lightbulb, a key, and a bell) are connected to the house by lines, pointing to the respective text blocks.



## **PARTNER AGENCY MESSAGES**

### **CUMBRIA COMMUNITY MESSAGING**

Please pass this message onto friends, family and residents of your areas to re highlight the issue.

If you would like to join Cumbria Community Messaging then please contact us or visit: [www.cumbriacommunitymessaging.co.uk](http://www.cumbriacommunitymessaging.co.uk)

It is managed by the Cumbria Neighbourhood Watch Association and offers you and other members of communities across Cumbria the means to receive crime information from Cumbria Police. You can select which information you wish to receive by managing your own settings, and it is completely FREE. Anyone can join, you do not have to be a member of Neighbourhood Watch (NHW), or become a member of NHW to join. Farm Watch, Church Watch and Camping and Caravan Watch are a small example of the schemes that you can register for. You can join as an individual or as a group. If you want to receive information but do not wish to be responsible for a larger group, you are still welcome to make use of this messaging system.

The National Rural Crime Network champions a better understanding of crime in rural areas, and new, effective ways to help to keep rural communities safer to learn more please visit: [www.nationalruralcrimenetwork.net](http://www.nationalruralcrimenetwork.net)

## **Security Advice & Tips**

## **Farm and outbuildings**

- Restrict access to your farm land & property with locked gates
- Ensure your home, farm & outbuildings are secure. Use British Standard locks & high security closed-shackle padlocks
- Consider fitting intruder alarms, CCTV & good outside security lighting, check regularly to ensure they work
- Lock windows & doors, remove keys from locks & keep out of visible reach
- Mark equipment & property with farm name & postcode, use a UV pen, engraving, stamping, tagging or forensic marking
- Hide valuable items from view & secure them in locked outbuildings
- Consider joining your local Farmwatch scheme

## **Vehicles, trailers & quad bikes**

- **Secure & immobilise vehicles & equipment when not in use**
- **Remove keys from the ignition & keep them somewhere secure**
- **Don't leave quad bikes or trailers unattended**
- **Consider storing vehicles & property in a secured building, if possible secured to the ground or wall, or inside a caged area**
- **Mark trailers & property with farm name & postcode, use a UV pen, engraving, stamping, tagging or forensic marking**

## **General advice**

- **Where possible install fuel tanks within secure buildings or cages made from a material resistant to attack**
- **Thieves may stake-out your property in advance by making up an excuse to call round. Try to take a note of their registration number, & report the incident to police**
- **Never advertise that you are away by leaving notes for tradesmen or delivery drivers**
- **Ensure you have adequate insurance cover**
- **Keep up to date on crime trends by joining Farmwatch**
- **When you are away, ask neighbours and friends to keep an eye on your property, & be prepared to do the same for them**
- **Take down registration numbers of suspicious vehicles & report suspicious activity to police immediately**

As well as Cumbria Constabulary the partners providing information are Cumbria County Council, Cumbria Fire and Rescue Service and Cumbria Neighbourhood Watch Association. If you do not have internet access, contact your local PCSO and they will aid in registering your details on the system.

### **FOLLOW US ON TWITTER AND FACEBOOK**

[www.twitter.com/copelandpolice](http://www.twitter.com/copelandpolice)

<https://www.facebook.com/cumbriapolice>

<https://crimestoppers-uk.org/>

Contact police on 101

For emergency always call 999

Report non-urgent incidents on our website at [www.cumbria.police.uk](http://www.cumbria.police.uk) in the contact us section.

#### **Ben Mitchinson**

Constable 328

Cumbria Constabulary Nuclear Estates Team (CCNET) - Whitehaven Station

T: 101

E: [ben.mitchinson@cumbria.police.uk](mailto:ben.mitchinson@cumbria.police.uk)

Find us on...

W: [www.cumbria.police.uk](http://www.cumbria.police.uk)

Facebook: [www.facebook.com/cumbriapolice](http://www.facebook.com/cumbriapolice)

Twitter: [www.twitter.com/cumbriapolice](http://www.twitter.com/cumbriapolice)

Whitehaven Police Station, Scotch Street, Whitehaven, CA28 7NN

---

Cumbria Constabulary - Safer Stronger Cumbria